



# SAFETY INSPECTION REPORT

Date: 18.12.2025

PROJECT NAME	LEAD INSPECTOR
Project XYZ	EHS Manager
PARTICIPANTS	
Project Manager, Site Manager, Foreman	

## EXECUTIVE SUMMARY

An EHS inspection was conducted at the Project XYZ site on December 18, 2025. The inspection revealed several critical safety violations that require immediate attention to prevent potential accidents and ensure worker safety. Key areas of concern include blocked fire exits, electrical hazards, lack of fall protection, improper use of personal protective equipment (PPE), and poor housekeeping practices. Several stop-work orders were issued during the inspection due to imminent dangers. The detailed findings and recommended corrective actions are outlined below.

While several safety deficiencies were observed, the inspection also noted positive aspects, including good attendance at toolbox talks, appropriate PPE usage during these sessions, a well-stocked safety point with clear access, and effective plant vehicle separation with adequate barriers. These positive findings indicate a commitment to safety in certain areas, which should be built upon to address the identified deficiencies and improve overall site safety culture and practices. Immediate corrective actions and consistent monitoring are necessary to ensure a safe working environment.

## 1. Blocked Fire Exit

Potentially Serious

Category:

Fire Safety

Location:

Unspecified

Assigned To:

Site Supervisor

Due Date:

18.12.2025

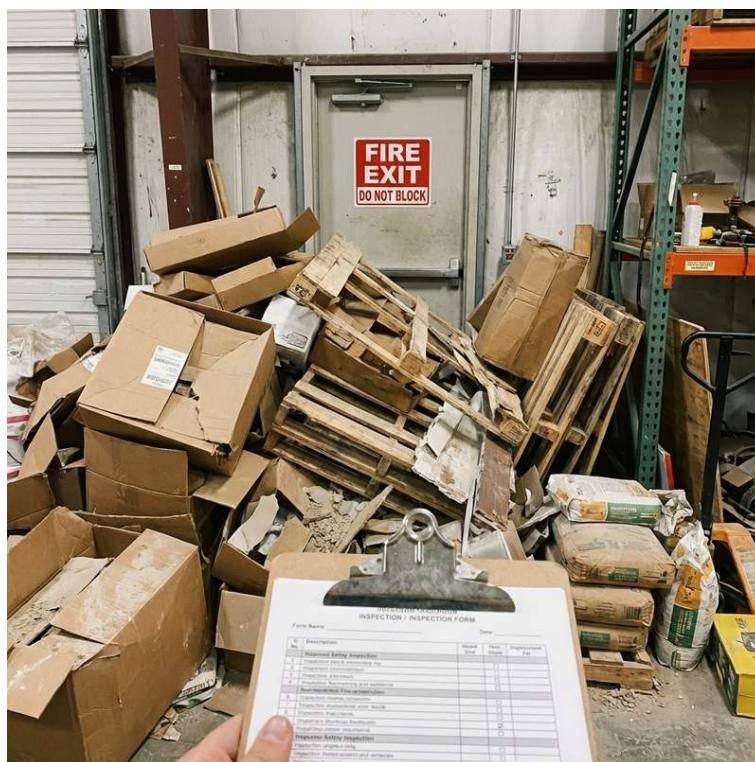
### OBSERVATION:

A fire exit was completely blocked by a large pile of wooden pallets and other debris, preventing its use in case of emergency. A 'FIRE EXIT' sign is visible above the door, but access is obstructed. This poses a significant safety hazard and violates fire safety regulations.

### CORRECTIVE ACTION:

Immediately clear the fire exit and ensure it remains unobstructed at all times. Implement procedures to prevent future blockage.





## 2. Exposed Electrical Wires

Critical

Category:  
Electrical Safety

Location:  
Unspecified

Assigned To:  
Electrical Foreman

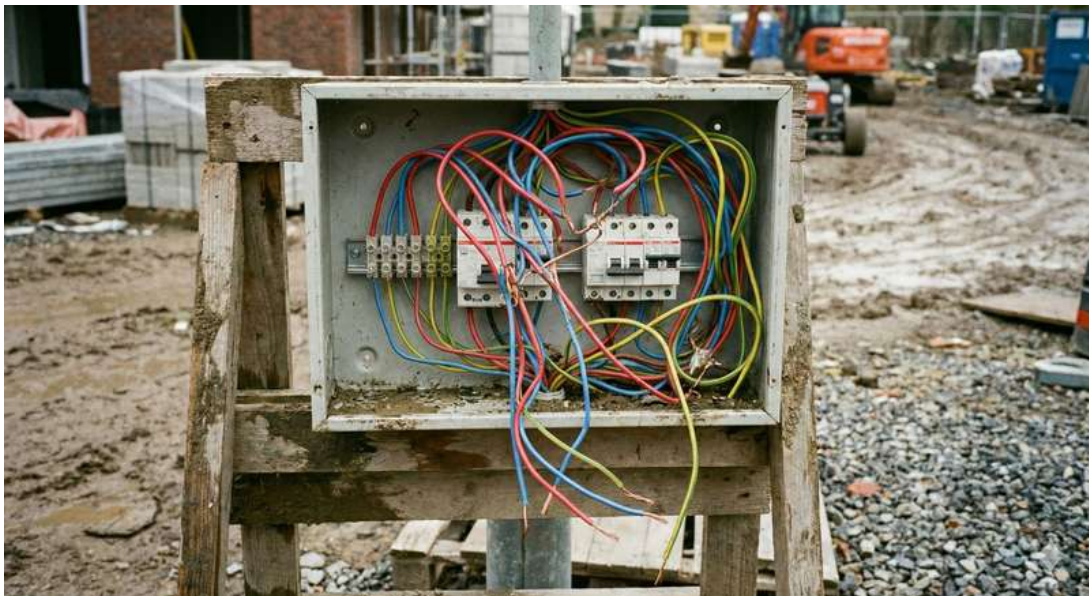
Due Date:  
18.12.2025

### OBSERVATION:

The cover of an electrical distribution board is missing, exposing live electrical wires. This creates a significant risk of electric shock. The wires are various colors (red, blue, yellow, green) and some are not connected, hanging loosely. An orange excavator is in the background.

### CORRECTIVE ACTION:

Immediately replace the missing cover and ensure all electrical boxes are properly enclosed and secured. Verify proper wire terminations and insulation.





### 3. Damaged Copper Cable

Potentially Serious

Category:  
Electrical Safety

Location:  
Unspecified

Assigned To:  
Electrical Foreman

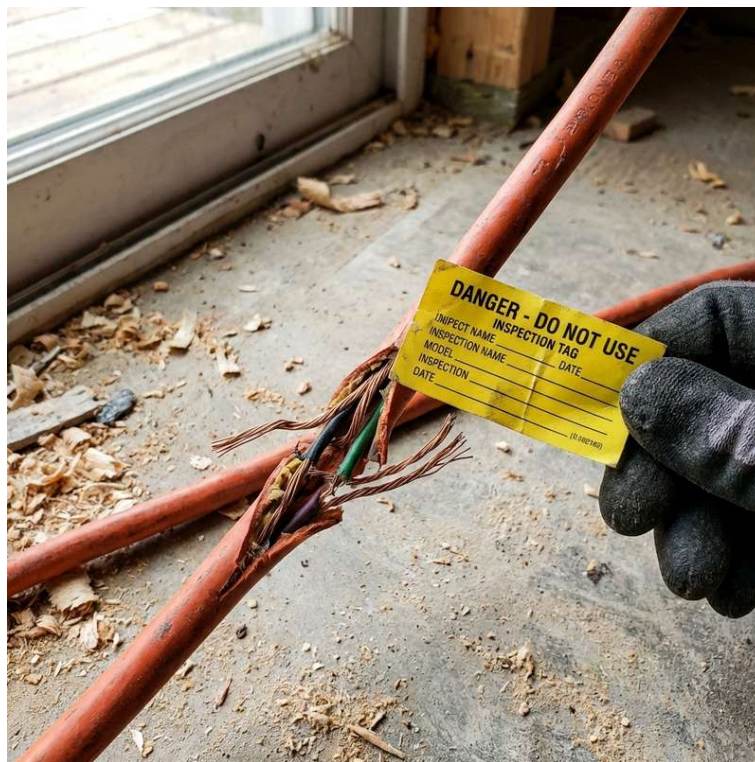
Due Date:  
18.12.2025

#### OBSERVATION:

A copper cable is exposed, indicating damage to the cord. A 'DANGER - DO NOT USE' tag is attached, indicating it has already been identified as unsafe. The outer jacket of an orange extension cord is torn open, exposing the internal wiring.

#### CORRECTIVE ACTION:

Remove the damaged cable from service immediately. Replace with a new, properly insulated cable. Ensure all damaged cords are tagged out and disposed of correctly.



## 4. Missing Balcony Guardrail

Critical

Category:  
Fall Protection

Location:  
4th Floor Balcony

Assigned To:  
Site Supervisor

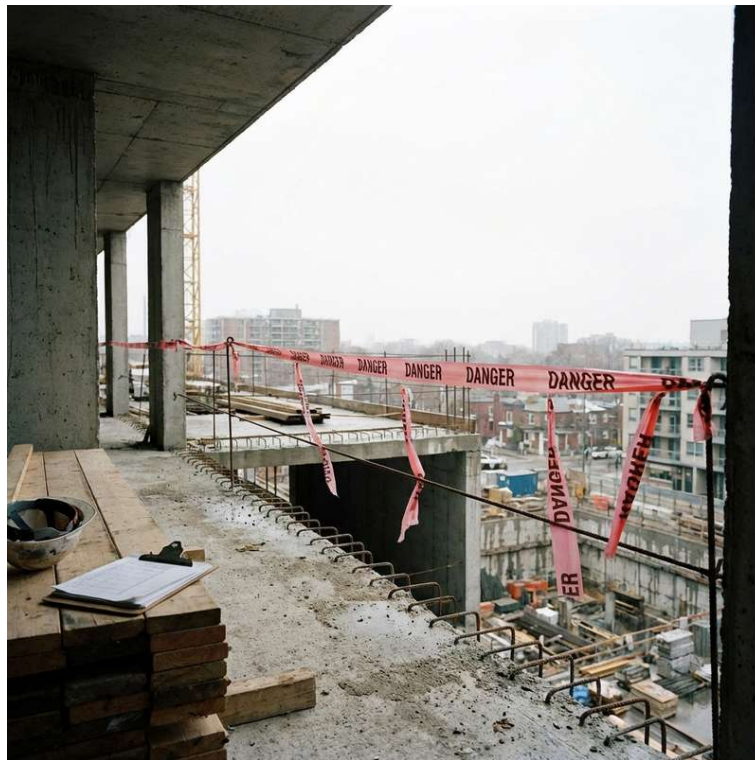
Due Date:  
18.12.2025

### OBSERVATION:

There is no guardrail on a balcony on the 4th floor, creating a significant fall hazard. Pink 'DANGER' tape serves as a barrier along the open edge of the concrete floor. Reinforcement bars extend upward from the concrete. The concrete is damp.

### CORRECTIVE ACTION:

Install a guardrail or other suitable fall protection measures immediately. Restrict access to the balcony until fall protection is in place.



## 5. Lack of PPE - Jackhammer

Potentially Serious

Category:

PPE

Location:

Unspecified

Assigned To:

Site Supervisor

Due Date:

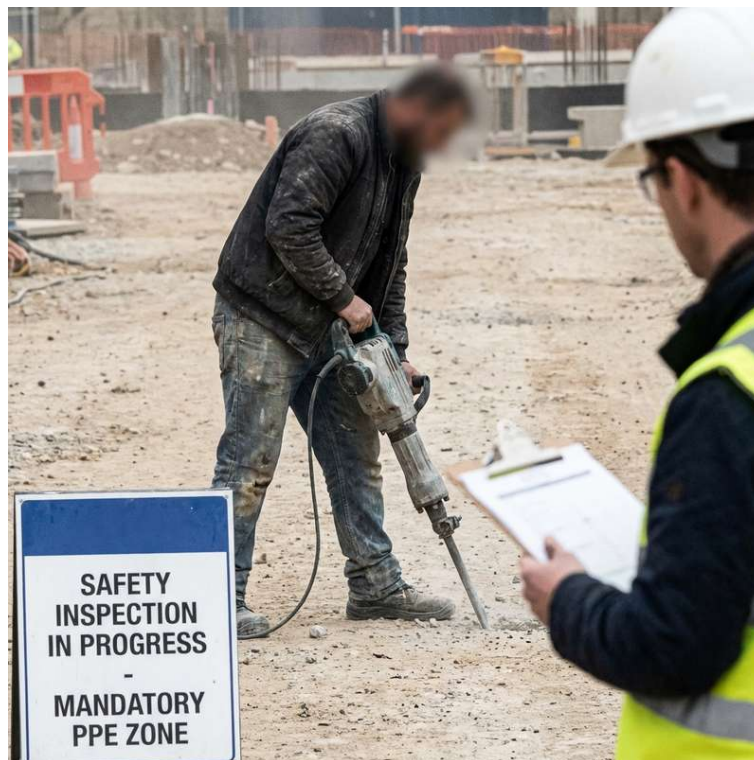
18.12.2025

### OBSERVATION:

A worker is using a jackhammer without proper PPE, specifically a helmet or earplugs. While a sign reads 'SAFETY INSPECTION IN PROGRESS' and 'MANDATORY PPE ZONE', the worker is not in compliance. He's wearing jeans, a black jacket, and work boots, but lacks appropriate head and hearing protection.

### CORRECTIVE ACTION:

Immediately stop the work and ensure the worker is provided with and uses the correct PPE (helmet, earplugs, and safety glasses). Enforce PPE requirements for all tasks.



## 6. Oil Spill Hazard

Potentially Serious

Category:  
Housekeeping

Location:  
Workshop Floor

Assigned To:  
Workshop Foreman

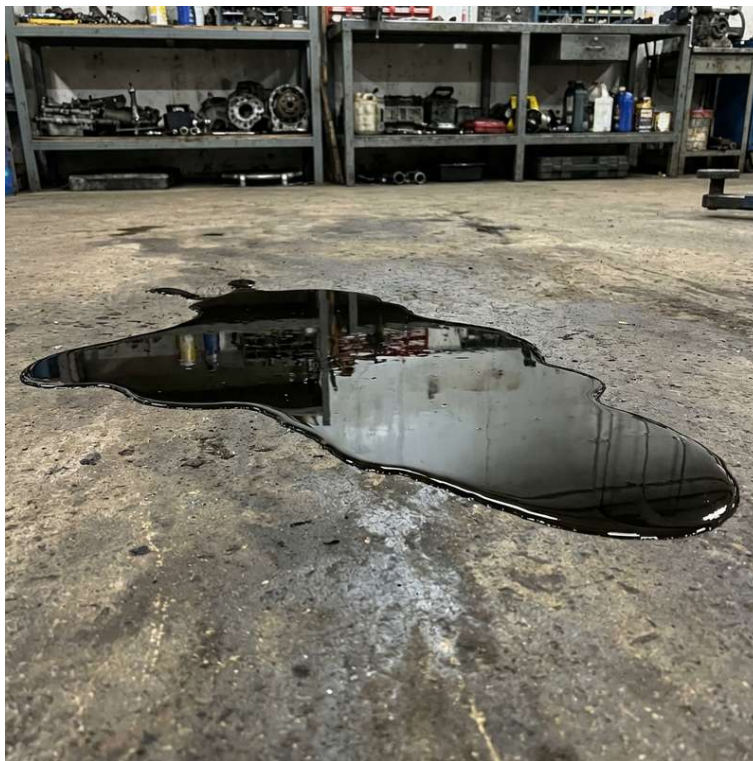
Due Date:  
21.12.2025

### OBSERVATION:

A large oil spill is present on the workshop floor, creating a slip and fall hazard. There is no cleanup or warning sign posted. The oil is black and reflects objects from the shelving in the background. The floor is stained and discolored.

### CORRECTIVE ACTION:

Clean up the oil spill immediately and implement procedures to prevent future spills. Place warning signs in the area until the spill is cleaned. Provide spill cleanup kits.





## 7. Overloaded Power Strips

Potentially Serious

Category:  
Electrical Safety

Location:  
Unspecified

Assigned To:  
Electrical Foreman

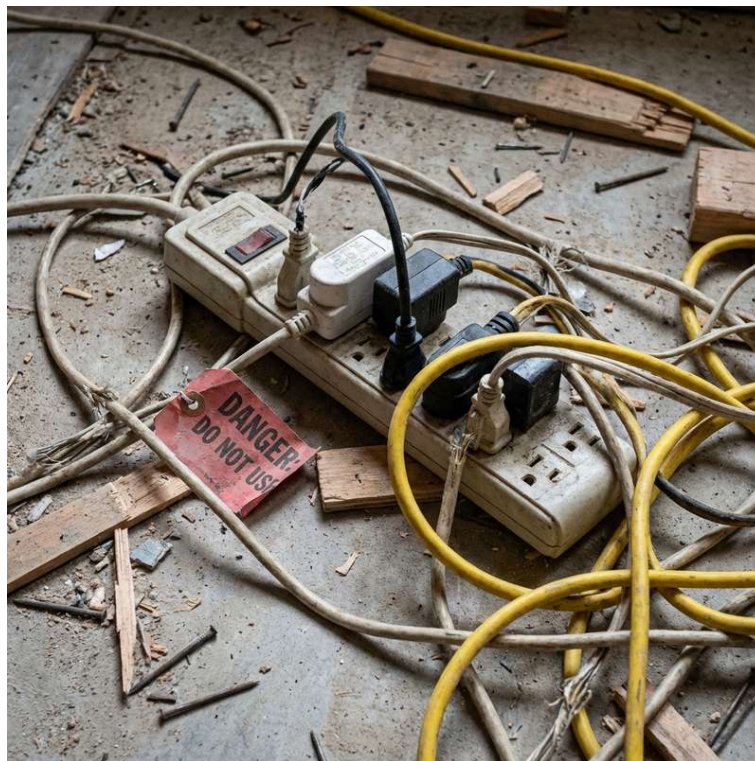
Due Date:  
18.12.2025

### OBSERVATION:

Power strips are plugged into other power strips, creating a fire hazard due to potential overload. An overloaded power strip with multiple plugs is lying on a dirty floor with a 'DANGER: DO NOT USE' tag partially obscured.

### CORRECTIVE ACTION:

Remove the overloaded power strips and use proper electrical outlets. Ensure power distribution is adequate and does not exceed the capacity of the circuits.



## 8. Cables Trip Hazard

Major

Category:  
Housekeeping

Location:  
Walkways

Assigned To:  
Site Supervisor

Due Date:  
21.12.2025

### **OBSERVATION:**

Electrical cables are spread across walkways, creating a tripping hazard. Multiple colored extension cords are tangled on the ground. Workers in high-visibility vests and boots are walking near the cords. The hallway is partially blocked by a pile of materials, including bags of cement, wooden pallets, and loose debris with electrical cords strewn amongst it. Yellow and orange extension cords are tangled and sprawled across a concrete surface.

### **CORRECTIVE ACTION:**

Secure the cables using tape or cable ties to prevent tripping hazards. Implement a cable management plan.





## 9. Damaged Ladder Rungs

Major

Category:  
Hand or Power Tools

Location:  
Unspecified

Assigned To:  
Equipment Manager

Due Date:  
21.12.2025

### **OBSERVATION:**

The aluminum ladder has bent and broken rungs, rendering it unsafe for use. A red 'DO NOT USE UNSAFE EQUIPMENT' tag is attached, dated '10/23/2023'.

### **CORRECTIVE ACTION:**

Remove the damaged ladder from service and replace it with a new, safe ladder. Dispose of the damaged ladder properly.





## 10. Obstructed Fire Escape

Potentially Serious

Category:

Fire Safety

Location:

Corridor

Assigned To:

Site Supervisor

Due Date:

18.12.2025

### OBSERVATION:

The corridor is full of lumber, blocking access to the fire escape. Flattened cardboard boxes are partially blocking the hallway. A fire extinguisher is mounted on the wall above the boxes.

### CORRECTIVE ACTION:

Clear the corridor and fire escape immediately. Ensure fire escape routes are kept clear at all times.





## 11. Unsecured Gas Cylinders

Critical

Category:

Fire Safety

Location:

Unspecified

Assigned To:

Warehouse Manager

Due Date:

21.12.2025

### OBSERVATION:

Gas cylinders are standing loose and are not chained, posing a risk of them falling over. Two gas cylinders, one green and one maroon, are leaning against a gray metal cabinet. A clipboard with a checklist is resting against the green cylinder, which is labeled 'OXYGEN'.

### CORRECTIVE ACTION:

Secure all gas cylinders with chains or other suitable restraints to prevent them from falling over. Ensure cylinders are stored in a designated, well-ventilated area.



## 12. Roof Work No Harness

Critical

Category:  
Fall Protection

Location:  
Roof

Assigned To:  
Site Supervisor

Due Date:  
18.12.2025

### OBSERVATION:

A worker is on the roof edge without a harness, presenting a severe fall risk. The worker is wearing a hard hat, reflective vest, and safety harness is walking along the edge of a tall building under construction. There are no visible guardrails or fall protection measures in place other than the worker's harness, which may or may not be properly attached.

### CORRECTIVE ACTION:

Stop work immediately and ensure all workers on the roof are using proper fall protection equipment, including harnesses and lifelines. Provide fall protection training.



### 13. Unshored Trench

Critical

Category:

Excavation

Location:

Trench

Assigned To:

Excavation Foreman

Due Date:

18.12.2025

#### **OBSERVATION:**

A worker is in a trench with no shoring, and the walls appear unstable, posing a collapse risk. The worker is wearing a yellow safety vest and a hard hat. Heavy machinery, including an excavator, is visible at the top of the trench. The trench appears to be unsupported.

#### **CORRECTIVE ACTION:**

Remove the worker from the trench immediately. Implement proper shoring or sloping techniques to stabilize the trench walls before any further work is conducted.



#### 14. Grinding No PPE

Critical

Category:

PPE

Location:

Unspecified

Assigned To:

Site Supervisor

Due Date:

18.12.2025

##### **OBSERVATION:**

A worker is grinding steel without proper eye protection. Sparks are flying in all directions. He is wearing a t-shirt, denim shorts, work boots, and eye protection, but no other personal protective equipment. The pipe appears to be resting directly on the concrete floor.

##### **CORRECTIVE ACTION:**

Stop work immediately and ensure the worker is wearing appropriate PPE, including a face shield, gloves, and protective clothing.





## 15. Unsafe Scaffold

Potentially Serious

Category:

Scaffolding

Location:

Unspecified

Assigned To:

Scaffolding Foreman

Due Date:

18.12.2025

### **OBSERVATION:**

Scaffold planks are cracked, and bracing is missing, making the scaffold unsafe. It needs to be tagged out.

### **CORRECTIVE ACTION:**

Tag out the scaffold immediately and prevent its use. Repair or replace the damaged planks and bracing. Have a competent person inspect the scaffold before use.

## 16. Filthy AC Vent

Minor

Category:  
Housekeeping

Location:  
Unspecified

Assigned To:  
Facilities Manager

Due Date:  
25.12.2025

### OBSERVATION:

The AC vent is filthy and needs cleaning due to dust buildup. The surrounding ceiling tiles are also stained and dirty. The office space below is visible and appears to be occupied with cubicles.

### CORRECTIVE ACTION:

Clean the AC vent and surrounding area to improve air quality and prevent potential health hazards.



## 17. Rubbish Accumulation

Minor

Category:  
Housekeeping

Location:  
Corner of Area

Assigned To:  
Site Supervisor

Due Date:  
25.12.2025

### OBSERVATION:

Rubbish, including empty boxes, is left in a corner and needs to be cleared up. A hallway is partially blocked by a pile of flattened cardboard boxes.

### CORRECTIVE ACTION:

Remove the rubbish and implement a regular cleaning schedule to maintain a tidy workspace.



## 18. Good Toolbox Talk

Positive Observation

Category:  
Safety Culture

Location:  
Unspecified

Assigned To:  
Safety Officer

Due Date:  
18.12.2025

### **OBSERVATION:**

Good toolbox talk attendance with everyone in full PPE is a positive observation. A group of construction workers, all wearing hard hats and reflective vests, are gathered in a circle. One worker is standing in the center holding a clipboard and appearing to give instructions.

### **CORRECTIVE ACTION:**

No corrective action.



## 19. Well-Stocked Safety Point

Positive Observation

Category:  
Safety Culture

Location:  
Safety Point

Assigned To:  
Safety Officer

Due Date:  
18.12.2025

### OBSERVATION:

The safety point is fully stocked and has clear access, which is a good job. A safety station is mounted on a wooden board against a gray wall. The station includes a red fire extinguisher, a white first aid kit with a green cross, and a green emergency eyewash station.

### CORRECTIVE ACTION:

No corrective action.





## 20. Good Vehicle Separation

Positive Observation

Category:  
Traffic Management

Location:  
Unspecified

Assigned To:  
Traffic Management Officer

Due Date:  
18.12.2025

### OBSERVATION:

Plant vehicle separation is well-managed with good barriers in place and a safe route designated. A construction site shows a designated pedestrian route marked by blue signs reading 'PEDESTRIAN ROUTE' on both sides. The route is bordered by orange and white water-filled barriers, and fenced off with metal mesh fencing.

### CORRECTIVE ACTION:

No corrective action.



## 21. Exposed Cables Hallway

Major

Category:  
Electrical Safety

Location:  
Hallway

Assigned To:  
Electrical Foreman

Due Date:  
21.12.2025

### **OBSERVATION:**

Exposed electrical cables hanging from the ceiling in a dimly lit, unfinished interior hallway. The cables are a mix of grey, black, and brown, with stripped ends. Yellow caution tape is stretched across the foreground. The floor is littered with debris and appears to be concrete. Lighting fixtures are present on the walls.

### **CORRECTIVE ACTION:**

Secure or remove the exposed cables and ensure all electrical wiring is properly insulated and protected.

